



EXELO₂

The Most Versatile CO₂ Laser System
for Fractional and Ablative Treatments



NEW

- > **ALL-PURPOSE SETTINGS** FOR FRACTIONAL TREATMENTS AND FULL ABLATION
- > ATTACHABLE COLD AIR COOLING FOR **GENTLE TREATMENTS**
- > **CONVINCING AESTHETIC RESULTS** DUE TO UNIQUE SCANNING PATTERN

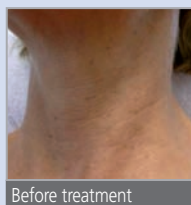
FAST, EFFECTIVE AND EASY TO HANDLE

Effective but Gentle

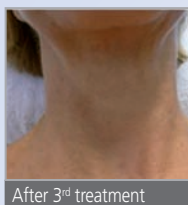
The CO₂ laser technology with its wavelength of 10,600 nm has proven itself in ablative skin resurfacing for many years. The FDA-approved fractional CO₂ laser system EXELO₂ brings this to perfection: It combines intense thermal stimulation of the collagen neosynthesis and micro fine ablation zones. This leads to an ideal balance of good clinical results and fast healing with minimal downtime. Furthermore, the attachable cold air cooling of EXELO₂ and its unique scanning pattern greatly improve the patient comfort during the treatment.

Beautiful Skin

EXELO₂ was primarily designed for visible rejuvenation of the skin through fractional treatment of wrinkles and scars. However, it also achieves good results on melasma¹. In Full Ablation Mode*, superficial skin lesions can easily be removed by ablation of the upper skin layers. With its peak power of up to 40 W and the extra handpiece, EXELO₂ also serves as a laser scalpel for surgical indications.*



Before treatment



After 3rd treatment

Courtesy of Dr. Kati Mayer, Munich, Germany

Discover EXELO₂ at:
www.exelo-laser.com

Fast, Easy and Reliable

A powerful laser combined with a handy scanner makes EXELO₂ ready for very fast fractional applications. Even the treatment of large and complex areas is easy, because the size and shape of the treatment area can be controlled directly from the handpiece. Thanks to the attachable cold air cooling, there is no need for anesthesia or assistance². Our treatment recommendations are based on a five-year experience in the market and long-term clinical studies³. This makes EXELO₂ a very reliable laser for high volume use.

Maximum Individuality

The flexible settings of EXELO₂ perfectly match the individual patient's needs:

- > Large treatment area up to 4 cm²
- > Adjustable shape: round, rectangular or triangular
- > Variable spot density from 25 to 400 points/cm² corresponds to an ablation of 1.25% to 20% of the treated skin. EXELO₂ can easily be switched to Full Ablation Mode.*
- > The pulse duration ranges from 1 to 100 msec; the energy is adaptable from 3 to 1000 mJ/shot. With short pulses and high energy, the ablation effect prevails; at longer pulses and lower energy, the thermal effect is more intense⁴.

Thanks to the flexible settings of EXELO₂, the fractional pattern and the attachable cold air cooling, even darker skin types can be safely treated.



Attachable
cold air cooling for
high patient comfort

YOUR ADVANTAGES AT A GLANCE

Fast and Efficient

- > CO₂ technology for thermal stimulation and ablation
- > Fractional scanning pattern
- > Large treatment area up to 4 cm²
- > Turbo pulse with up to 40 W peak power
- > Visible results after very few sessions

Cold Air Cooling

- > Connection directly at handpiece
- > Improved patient comfort
- > No need for topical anesthesia
- > Low risk of side effects such as PIH
- > Safe treatment of darker skin types

Maximum Flexibility

- > Variable size and shape of treatment area
- > Individual setting of spot density, pulse duration and energy
- > Full Ablation Mode*
- > Laser scalpel* with 0.25 mm, 1 mm or 2 mm spot size (optional)

Perfect Handling

- > Scanner control directly from handpiece
- > Good visibility of the treatment area
- > Well balanced articulated arm with integrated air suction
- > Repeat Mode for improved operator comfort
- > Integrated pulse counter

High Patient Satisfaction

- > Fast healing through micro fine ablation channels and cold air cooling
- > No overheating of the skin through fractional pattern and jumping scanning
- > Random Mode and Soft Random Mode for good aesthetic results
- > Hygienic, removable treatment tips

Quick ROI

- > Low operating costs: no disposables, no consumables
- > Ready for high volume use
- > No assistance necessary

Users about the CO₂ Laser System EXELO₂

"I have been using the EXELO₂ for 5 years now. I am very happy with the **speed of the treatment**, the **fast healing process**, the nice results on wrinkles and skin laxity. The procedure is **not painful** and does not require anesthesia. Patients also like this comfort very much."

Dr. Sylvie Angel, Paris, France

"Asian skin types are usually prone to developing PIH after fractional treatments. An effective cooling system reduces this risk to a minimum. The **cooling device** of EXELO₂ can be connected directly to the handpiece and is **much more effective** than cooling that is administered by an assistant. I rarely see PIH in Korean patients anymore."

Un-Cheol Yeo, M.D., Ph.D.
S & U Skin Clinic, Seoul, Korea

"EXELO₂ offers **very flexible settings**. I really like that the shape and the size of the treatment area can be controlled directly from the handpiece. This saves a lot of time. I got **very good aesthetic results** on **fine wrinkles, acne scars** and **uneven skin texture**."

Dr. Kati Mayer, Munich, Germany

YOUR FRACTIONAL WAY TO BEAUTY

Easy Treatment of Complex Areas

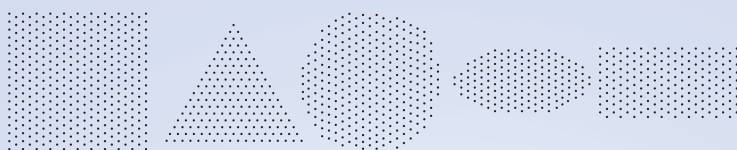
EXELO₂ is the perfect tool for fast treatments of anatomically complex areas with multiple wrinkles and scars, such as a full face and neck. The flexible treatment area is adjustable according to the individual patient's needs. Whether round, rectangular or triangular, it always offers the perfect pattern without overlapping: Shape and size of the treatment area can be modified directly on the handpiece, with free settings for length and width, each up to 20 mm. The integrated pulse counter provides an overview on the applied energy.

The jumping scanning pattern assures that the laser never shoots at neighbouring zones, thus avoiding bulk heating. In addition, Random Mode ensures good aesthetic results by randomly placing the spots. With Soft Random Mode, the gentle fading out at the borders provides seamless transitions.

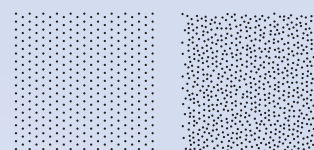


Courtesy of Dr. Dominique Boineau, Bordeaux, France

The Unique Scanning Technology of EXELO₂



Shape and size of the treatment area can be freely adjusted up to 4 cm²



Comparison of Standard Mode and Soft Random Mode

Technical Specifications EXELO₂

Laser type	CO ₂	Beam diameter	< 250 µm
Wavelength	10,600 nm	Treated area	1.25%–20%
Operating Mode	Fractional/continuous wave (cw)	Output power	3–40 W
Spot density	25–400 pts/cm ²	Power requirements	100–240 V, 10 A, 50/60 Hz
Pulse width	1–100 msec + cw	Dimensions (L x W x H)	70 x 34 x 41 cm

Technical specifications are subject to change without notice. Intended use may differ from this brochure. Product specifications may vary for products sold in the US. *Not available in the US.

¹ Kolbe A. Use of the fractional CO₂ "EXELO₂" on melasma in "Reunion Island". Preliminary results.

² Angel S, Boineau D. Fractional ablative resurfacing: A 18 month clinical evaluation of a CO₂ laser combined with air cooling.

³ Bodendorf MO, Grunewald S, Wetzig T, Simon JC, Paasch U. Fractional laser skin therapy. JDDG 2008 (Band 6).

⁴ Paasch U, Illes M, Grunewald S, Helbig D, Simon JC, Bodendorf M. Influence of laser settings on histological dimensions of fractionated microscopic ablation zones.

Quantel Derma GmbH

Am Wolfsmantel 46
91058 Erlangen, Germany
info@quantel-derma.com
www.quantel-derma.com